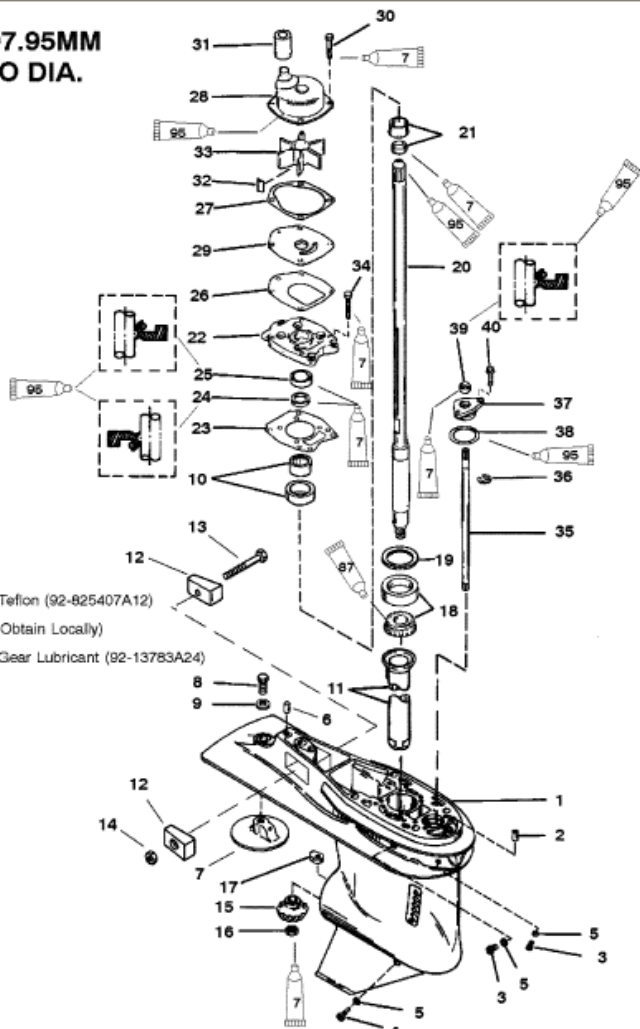


**4.25 IN./107.95MM
 TORPEDO DIA.**



- 2-4-C With Teflon (92-825407A12)
- Loctite 271 (Obtain Locally)
- Super Duty Gear Lubricant (92-13783A24)

Parts List

Ref	Class	Part	Description	Qty	Comment	Footnote
-	1667	9011G18	GEAR HOUSING	1	(BLACK)	
-	1667	9011G19	GEAR HOUSING	1	(GRAY)	
1	1667	9011G 8	GEAR HOUSING	1	(BLACK) BASIC	
1	1667	9011G 9	GEAR HOUSING	1	(GRAY) BASIC	
2	17	43043	DOWEL PIN (FRONT)	1		
3	10	79953A 2	DRAIN SCREW	2		
4	22	67892A 1	SCREW (MAGNETIC)	1		
5	12	19183	WASHER-SEALING	3		8,9
6	17	43044	DOWEL PIN (REAR)	1		
7		31640 5	TRIM TAB	1		
8	10	825427	SCREW (7/16-14 X 1-1/4)	1		
9	12	45176	WASHER	1		
10		43040A 1	CARRIER	1		
11		43046	DILER TUBE	1		
12		826134	ANODE	2		
13	10	40003 33	SCREW	1		
14	11	826833 6	NUT	1		
15	43	44484	PINION GEAR (ALSO PART OF	1		
16	11	35921	NUT	1		
17		850307	SHIFT CAM	1		
18	31	42677A 1	TAPERED ROLLER BEARING	1		
19	15	44492A 1	SHIM ASSEMBLY	1		
20	45	854808A 1	DRIVE SHAFT ASSEMBLY	1		
21		42461A 1	WEAR SLEEVE ASSEMBLY	1		
22		43055A 4	COVER ASSEMBLY	1		9
23	27	43047 2	GASKET	1		8,9
24	26	43036	OIL SEAL (LOWER)	1		8,9
25	26	43035	OIL SEAL (UPPER)	1		8,9
26	27	43033 1	GASKET	1		8,9
27	27	817277	GASKET	1		8,9
28		817275A 2	WATER PUMP ASSEMBLY	1		9
29		817276	FACE PLATE	1		9
30	10	824832 7	SCREW (M6 X 30)	4		9
31		43023	SEAL	1		8,9
32	28	43037	KEY	1		9
33	47	43026 2	IMPELLER	1		9
34	10	824832 6	SCREW (M6 X 25)	6		
35		853906A 1	SHIFT SHAFT ASSEMBLY	1		
36	53	29641	E-RING	1		
37	23	43052A 4	BUSHING ASSEMBLY	1		
38	25	45710	O-RING	1		9